

Model CeraGrav

HDPE Gravity Filter Instruction Sheet
Original Doulton® Ceramic Filter Technology

AquaCera
Doulton ceramic technology inside

ASSEMBLY INSTRUCTIONS:

1. Remove the housing and elements from their protective packaging, checking each item against the diagram.
2. Extreme cleanliness is important. Sterilize all parts, except the ceramic elements, before assembly.
3. Place the sealing washer (5) over the threaded part of the filter element (4).
4. Place the element (4) into the holes in the base of the upper section (2).
5. Screw the wing nut (6) onto the threaded part of the filter element extending through the base of the inner section. Hand-tighten the wing nut to seal and compress the sealing washer to secure the filter elements in place. Repeat steps 3-6 for each filter being used in the system.
6. Place the tap washer (8) onto the threaded section of the tap (7). With the washer in place, insert the tap through the hole in the base of the bottom section (1). With the tap (7) in place, position the tap nut (9) over the threaded part and tighten.
Note: tap washer **MUST** be placed on the tap prior to inserting through hole in bottom section to ensure a proper fit against leaks.
7. Place the upper section (3) into the bottom section (1) and place the lid (3) on top of the unit. Place entire unit on base (10). Assembly is now complete.

OPERATION:

1. Ensure the outlet tap (7) is closed.
2. Remove lid (3) and fill upper section (2) with water.
3. Filtered water will collect in the bottom section (1) ready for use.

Note:

We recommend the first supply of filtered water be discarded as it may contain loose material washed from the filter elements.

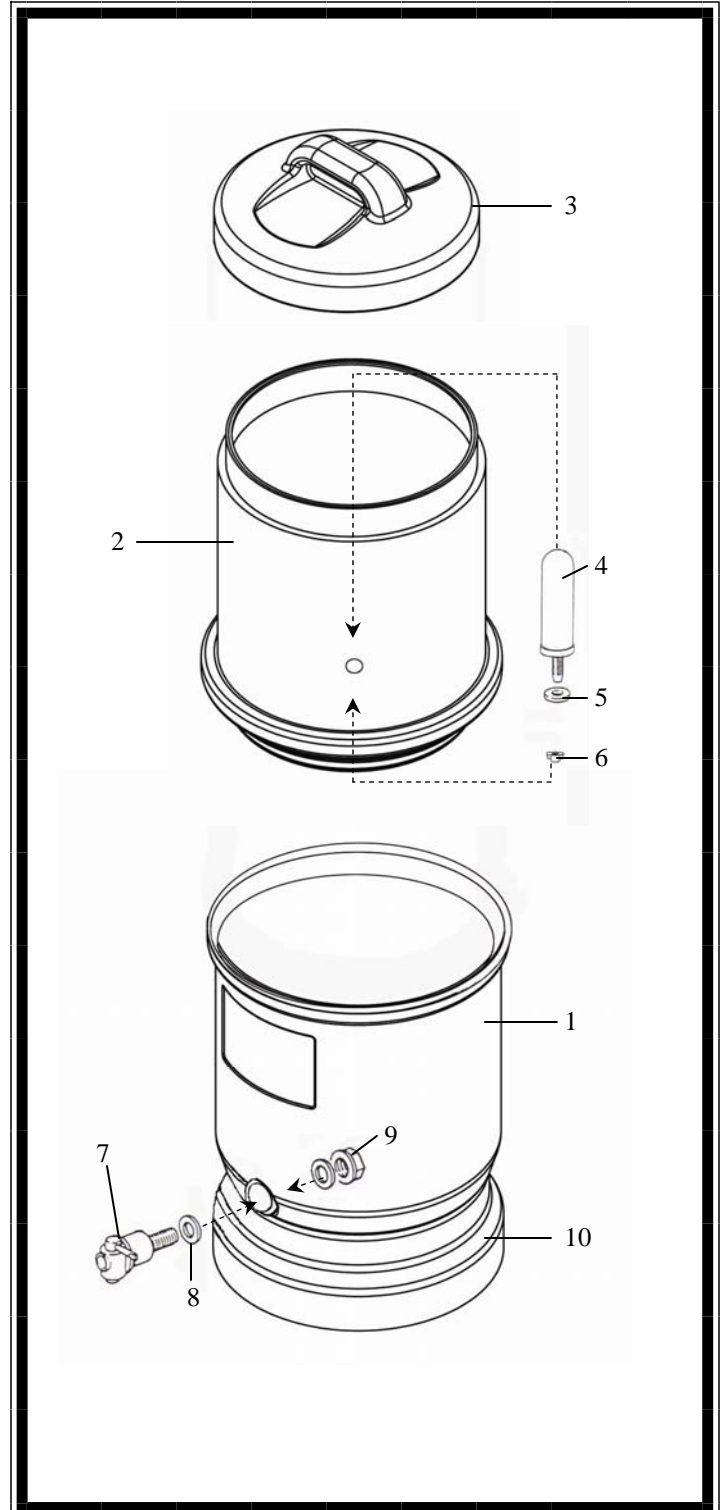
SERVICING:

The ceramic filter elements (4) should be cleaned when there is a noticeable drop in filtration time. To clean the elements:

1. Remove the element from the inner section by unscrewing the wing nut.
2. While holding the element under running water or in a bowl of water, scrub the element with a stiff brush or 3M Scotchbrite pad. Always scrub away from the threaded end of the element.
Note: NEVER use soap or detergent to clean the elements.
3. Reassemble the elements as detailed above.

Note: Filter elements should be replaced annually.

Note: This gravity filter is designed to remove harmful bacteria from water, not total dissolved solids (TDS).



Note: Filtration efficiencies are the same for both the Doulton and British Berkefeld ceramic water filters.

Doulton and British Berkefeld water filters are manufactured in England by Fairey Industrial Ceramics, Ltd.

Doulton Water Filters have been manufactured since 1827.